

## Series 015 VP

### Cylinder for mail boxes

#### Features

Body, plug, pins and keys: solid brass.

Springs: special bronze.

Fixing nut and locking cam fixing screw: zinc.

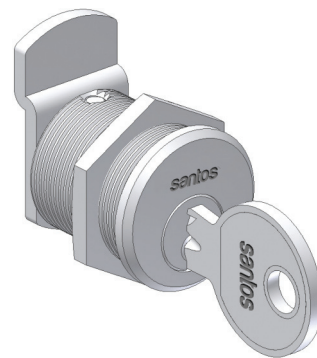
Key rotation: 0° to -90°.

Key removal at 0°.

Locking plate assembly: 0°, 90°, 180° or 270°.

Note: other locking plates available.

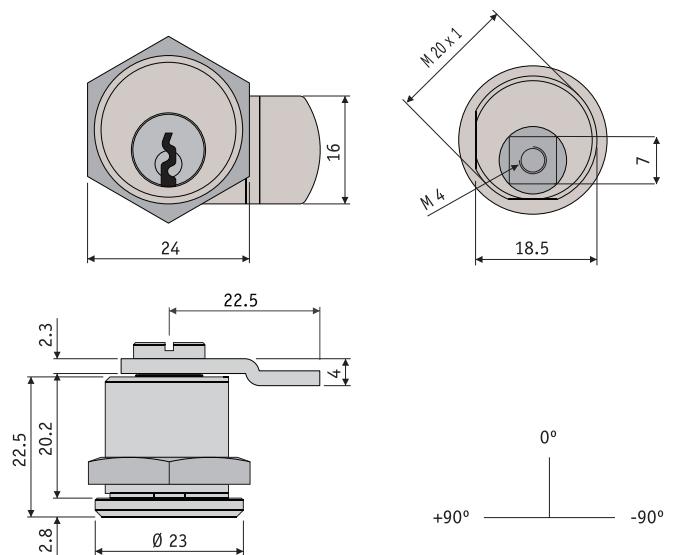
Note: other models and dimensions available by request.



#### Options

11 Hand: right (D); left (E)

13 Finish: nickel plated (N)



#### Code

1	2	3	4	5	6	7	8	9	10	11	12	13
C	0	1	5	V	P	2	3	2	3		2	N